

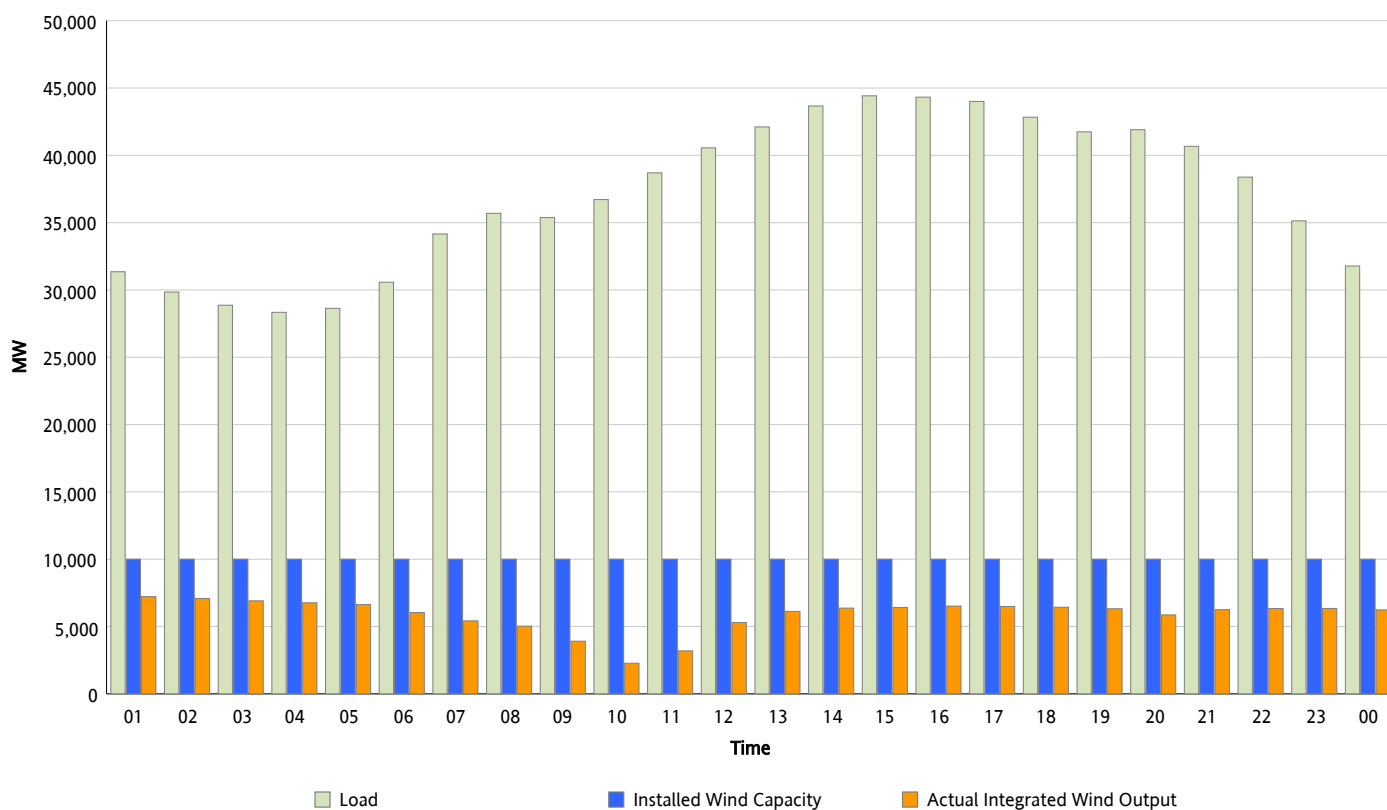


ERCOT Grid Operations

Wind Integration Report : 10/25/2012

Peak Load	44,420 MW
Load Peak Hour (HE)	15
Wind Over Peak	6,419 MW
Wind Record 06/19/12	8,368 MW
Max Wind Value*	7,319 MW
Wind Peak Time	00:40
Wind Integration %	23.55 %

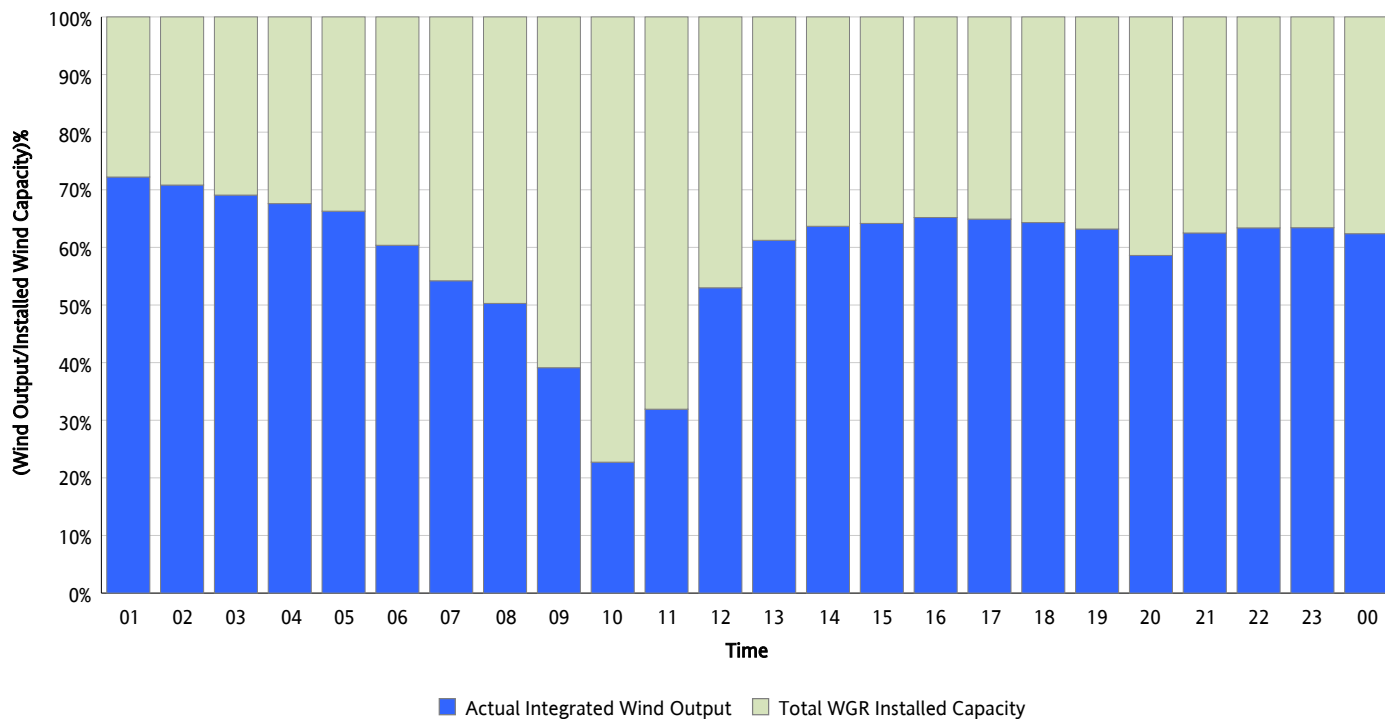
Hourly Average Actual Load vs. Actual Wind Output
10/25/2012



* Wind Record and Wind Max represent instantaneous values and the rest of the values are integrated over the hour

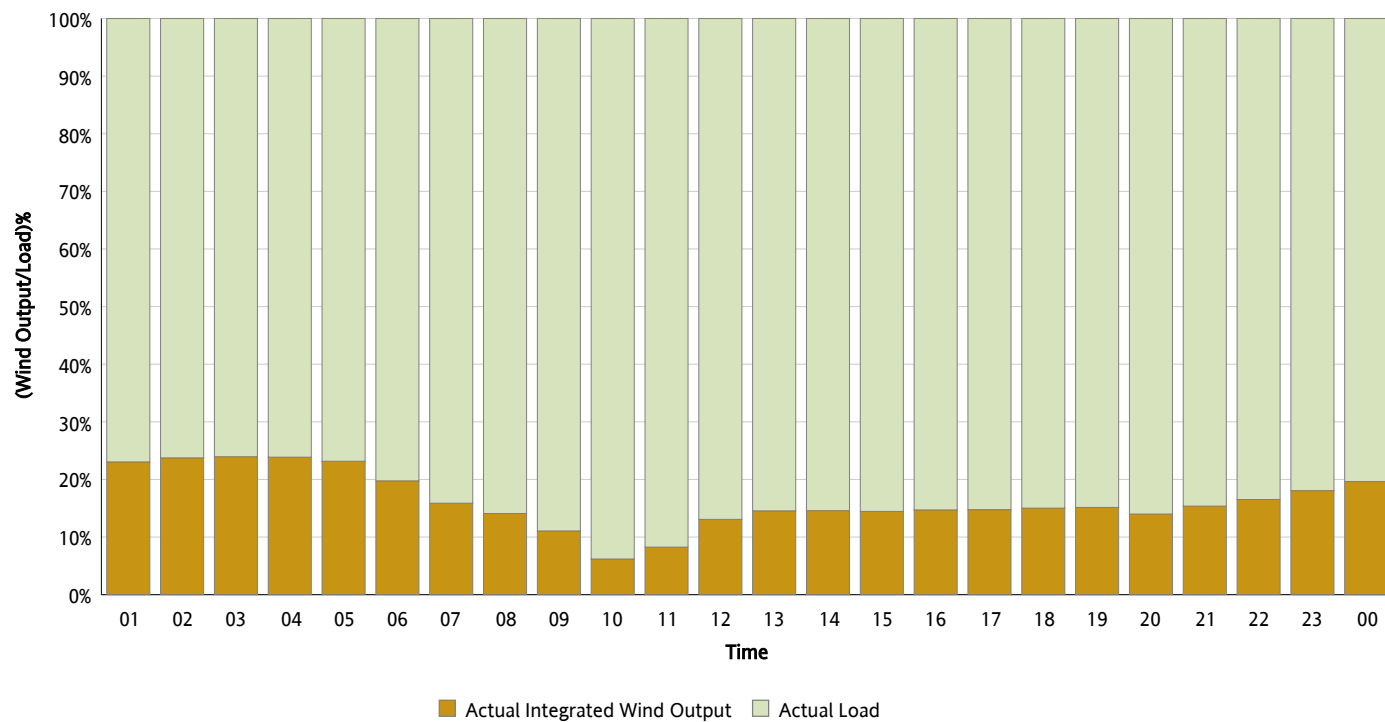
Actual Wind Output as a Percentage of the Total Installed Wind Capacity

10/25/2012



Actual Wind Output as a Percentage of the ERCOT Load

10/25/2012



ERCOT Load vs. Actual Wind Output

10/18/2012 - 10/25/2012

